

SPECIFICATION



D2 LED TRIPROOF LIGHT

(Basical Choice for Wholesale/Projects)

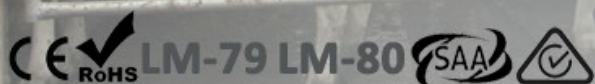
Features



D2 LED Triproof Light

(Basic Choice for Wholesale / Project)

- > EPISTAR/SAN'AN High Brightness SMD2835 LEDs, Built-in Flicker/Flicker-free Driver Optional;
- > Full Plastic Material, Eco and Environment Friendly;
- > IP65 / IK08 Protection;
- > Multiple Installations Optional (Suspension, Ceiling Mounted);
- > Single or Double wiring, Multiple-link with Double Wiring;
- > 120° Beam Angle;
- > Customized Supported for Special Projects;



- > High Brightness SAN'AN SMD2835 LEDs, DUALRAYS Own Developed High PF Flicker-free Driver;
- > Full Plastic Material, Eco and Environment Friendly;
- > IP65 / IK08 Protection;
- > 120° beam angle;
- > Single or Double Wiring Optional, Linkable Through Double End Wiring;
- > Multiple Installations: Suspension, Wall Mounting;
- > Easy Installation via Connection Terminal Inside;
- > No UV or IR and completely mercury free;
- > L70/B20 @ 50.000h;
- > Customized supported for special projects;

Options:

- > Plug: European / Australia plug with 0.75mm²/1.5mm²/2.5mm² 3-pins or 5-pins (dimming) cable;
- > Installation : Suspension, Wall Mounting;
- > Wiring: Single or double wiring;

Application

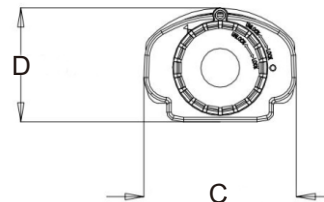
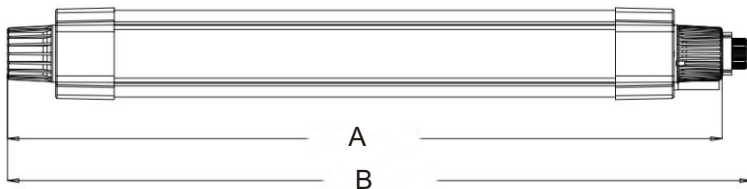
- > Replacement for fluorescent NCF;
- > Workshops and warehouse;
- > Garage and car parks;
- > Sport facility;
- > Corridor/Gallery/Corridor;
- > Outdoor & Indoor Locations;

Technical Parameters

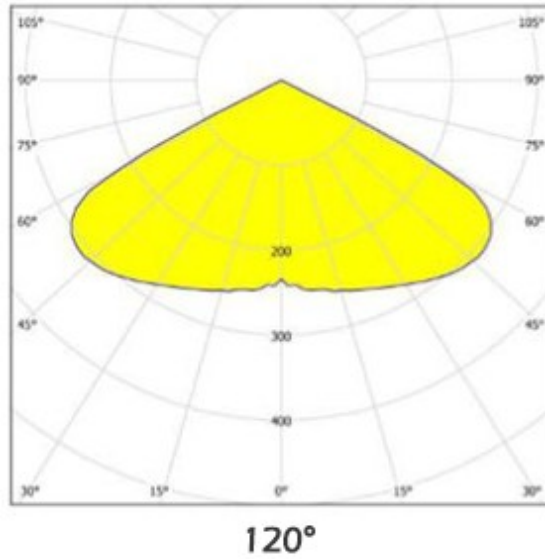
Model No.	DR-TP020-BG2XPX	DR-TP030-BG4XPX	DR-TP040-BG4XPX	DR-TP040-BG5XPX	DR-TP050-BG5XPX
System Watts/W	20W	30W	40W	40W	50W
System Efficiency/LPW	120LPW / 140LPW Optioanl				
Lumen Output/lm	2.400/2.800±5%	3.600/4.200±5%	4.800/5.600±5%	4.800/5.600±5%	6.000/7.000±5%
Rated Input Voltage/V	AC200~240V 50/60Hz (AC100~277V, 50/60Hz Optional)				
LEDs Light Source	SMD2835				
SDCM	<6				
CCT/K	5000K for Standard (3000K/4000K/5700K/6500K Optional)				
CRI/Ra	>80Ra (>70Ra for Option)				
Power Factor	>0.94				
THD	<10%				
Beam Angle(Optional)	120°				
UGR	<22				
LED Driver	DUALRAYS Own Developed High PF Interior Driver				
IP Rating	IP65				
IK Level	IK08				
Dimming(Optional)	1-10V				
Protection Class	Class I				
Finishing Color(Optional)	RAL9016 Matt White				
Material	PC+PC				
Lifespan/hrs	50.000 Hrs (Ta=30°C@L70)				
Operation Temp/°C	-40°C to + 50°C(-40°F to 122°F)				
Storage Temp/°C	-40°C to + 65°C(-40°F to 149°F)				
Installation	Suspension / Ceiling Mounting Optional				
Certificate	CE(EMC+LVD),RoHS,ENEC ,SAA,RCM Available				

Dimensions

Character/Length	2ft	4ft	5ft
A	631mm	1231mm	1531mm
B	656mm	1256mm	1556mm
C	80mm	80mm	80mm
D	60mm	60mm	60mm



Photometry Diagram



Installation

Ceiling Mounted

- 1 Switch Off
- 2 Push and tighten screws with screwdriver.
- 3 Unscrew the screws on the knob and twist the knob to separate end cap.
- 4 Install PG connector into the knob and enter the input cable.
- 5 Connect the input cable to the corresponding position on the terminal.
- 6 Reload the knob lock screws and tighten PG connector.
- 7 Install the luminaire with clips.
- 8 Turn on Switch

Suspension

- 1 Push
- 2 Tighten the screw with screwdriver
- 3 Connect stainless cable to the screws and clips
- 4 Install the lamp

INSTALLATION GUIDE

IMPORTANT SAFETY INFORMATION:

Please read all the instructions below before installation

- > Make sure that the supply voltage corresponds to the rated product voltage;
- > The product must be installed by a qualified electrician in accordance with the National Electrical Code and corresponding local codes.
- > If the product is damaged, do not use it!



Turn Off Power Supply

Wiring Diagram

L	brown	black
N	blue	white
⊕ GND	yellow/green	green

RISK OF PERSONAL INJURY – READ and follow all WARNINGS and installation instructions.

Keep or give to the owner for future reference.

Risk of cuts: Wear gloves to prevent cuts or abrasions when removing from carton, handling, installing, and maintaining this product.

Risk of electric shock: This product must be installed in accordance with the applicable installation code by a person familiar with the construction and operation of the product and the hazards involved.

Risk of Fire: Minimum 194°F supply conductors. Consult a qualified electrician to ensure correct branch circuit conductor.

DUALRAYS® assumes no responsibility for claims arising out of improper or careless Installation or handling of this product.

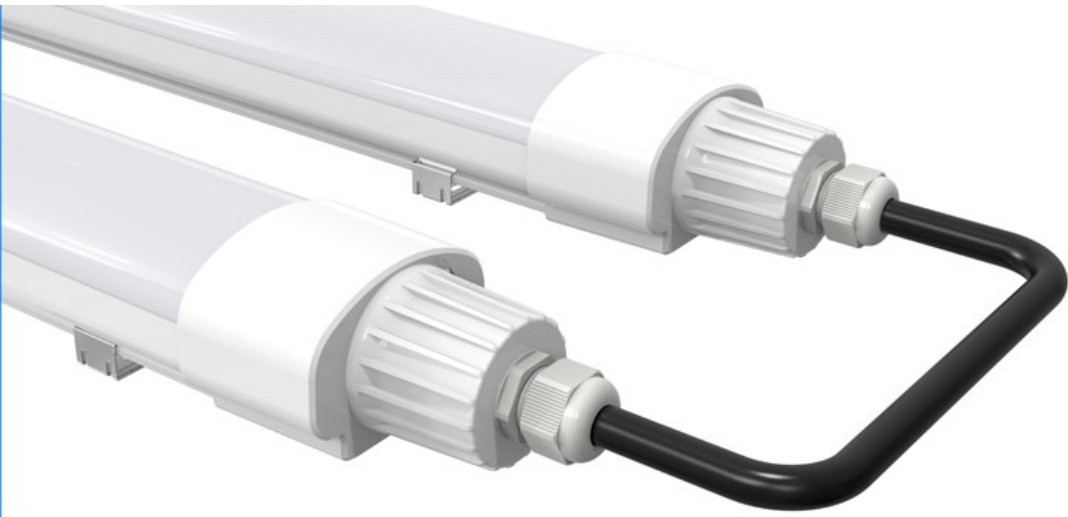
Packaging Information

Model No.	Net Weight/Kg	Outer Carton Size/mm	Gross Weight/Kg	QTY"/CTN
DR-TP020-BG2XP	8.9	670*440*200	9.4	9PCS
DR-TP030-BG4XP	11.2	1270*360*200	12.3	9PCS
DR-TP040-BG4XP	11.9	1270*360*200	13.2	9PCS
DR-TP040-BG5XP	15.3	1570*360*200	16.8	9PCS
DR-TP050-BG5XP	16.9	1570*360*200	18.4	9PCS

Details Demo



Linkable Through
Single Wiring>>>



Linkable Through
Double Wiring>>>



Application Reference

