

SPECIFICATION



D3 LED TRIPROOF LIGHT

(Eco Choice for Your Projects)

Features



D3 LED Triproof Light

(Eco Choice for Your Projects)

- > EPISTAR/SAN'AN High Brightness SMD2835 LEDs (0.5W), High PF Flicker-free Driver, DIP Switch Power Adjustment Optional;
- > Full Plastic PC Housing and Cover, Al Profile PCBA Holder Inside, Eco and Environment Friendly;
- > IP65 / IK08 Protection;
- > Multiple Installations Optional (Suspension, Ceiling Mounted);
- > Single or Double Wiring, Multiple-link with Double Wiring
- > Various Intelligent Control: 1-10V, DALI, Motion sensor, Daylight sensor, Zigbee and Emergency Optional;
- > 120° Beam Angle;
- > Customized Supported for Special Projects;



- > High Brightness SAN'AN SMD2835 LEDs, BOKE High PF Flicker-free Driver DIP Switch Power Adjustment Optional;
- > Full Plastic PC Housing and Cover, Al Profile PCBA Holder Inside, Eco and Environment Friendly;
- > IP65 / IK08 Protection;
- > 120° beam angle;
- > Single or Double Wiring Optional, Linkable Through Double End Wiring;
- > Multiple Installations: Suspension, Wall Mounting;
- > Various intelligent control: 1-10V, DALI, Motion sensor, Daylight sensor, Zigbee and Emergency;
- > No UV or IR and completely mercury free;
- > L70/B20 @ 54,000h;
- > Customized supported for special projects;

Options:

- > Driver: BOKE fixed power driver, DIP switch power adjustable driver;
- > Controls and Dimming: Zigbee wireless control / 1-10V Dimming / Daylight sensor, Microwave sensor, Emergency;
- > Plug: European / Australia plug with 0.75mm²/1.5mm²/2.5mm² 3-pins or 5-pins (dimming) cable;
- > Installation : Suspension, Wall Mounting;
- > Wiring: Single or double wiring;

Application

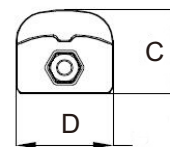
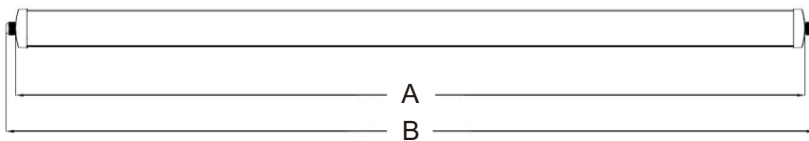
- > Replacement for fluorescent NCF;
- > Workshops and warehouse;
- > Garage and car parks;
- > Sport facility;
- > Corridor/Gallery/Corridor;
- > Outdoor & Indoor Locations;

Technical Parameters

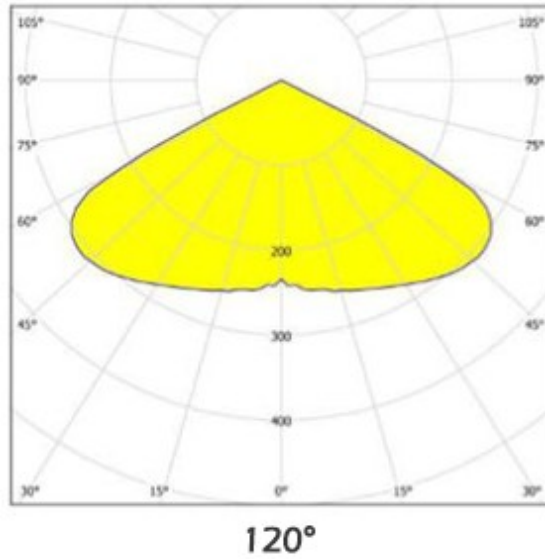
Model No.	DR-TP020-CG2XPX	DR-TP030-CG4XPX	DR-TP040-CG4XPX	DR-TP040-CG5XPX	DR-TP050-CG5XPX
System Watts/W	20W	30W	40W	40W	50W
System Efficiency/LPW	130LPW / 160LPW Optionl				
Lumen Output/lm	2.600/3.200±5%	3.900/4.800±5%	5.200/6.400±5%	5.200/6.400±5%	6.500/8.000±5%
Rated Input Voltage/V	AC200~240V 50/60Hz (AC100~277V, 50/60Hz Optional)				
LEDs Light Source	SMD2835				
SDCM	<6				
CCT/K	5000K for Standard (3000K/4000K/5700K/6500K Optional)				
CRI/Ra	>80Ra (>70Ra for Option)				
Power Factor	>0.91				
THD	<10%				
Beam Angle(Optional)	120°				
UGR	<22				
LED Driver	BOKE Fixed Power/ DIP Switch Power Adjustable Optional				
IP Rating	IP65				
IK Level	Ik08				
Dimming(Optional)	1-10V, DALI,Zigbee				
Emergency(Optional)	5W@3 Hours or Customized				
Sensor (Optional)	Daylight sensor/Microwave Sensor				
Protection Class	Class I				
Finishing Color(Optional)	RAL9016 Matt White				
Material	PC+PC				
Lifespan/hrs	54.000 Hrs (Ta=30°C@L70)				
Operation Temp/°C	-40°C to + 50°C(-40°F to 122°F)				
Storage Temp/°C	-40°C to + 65°C(-40°F to 149°F)				
Installation	Suspension / Ceiling Mounting Optional				
Certificate	CE(EMC+LVD),RoHS,ENEC ,SAA,RCM Available				

Dimensions

Character/Length	2ft	4ft	5ft
A	602mm	1202mm	1502mm
B	638mm	1238mm	1538mm
C	63mm	63mm	63mm
D	73mm	73mm	73mm

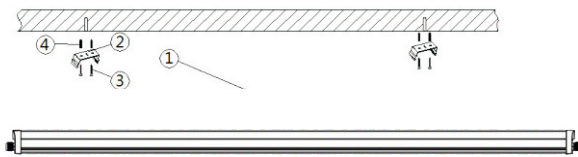


Photometry Diagram



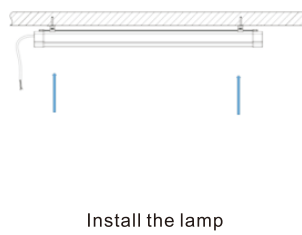
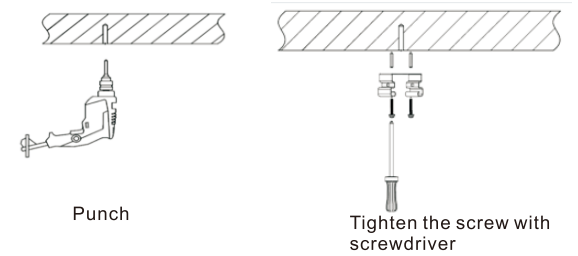
Installation

Ceiling Mounted

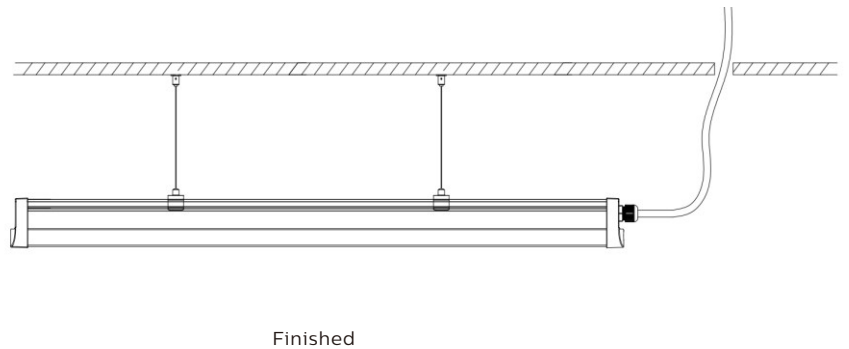
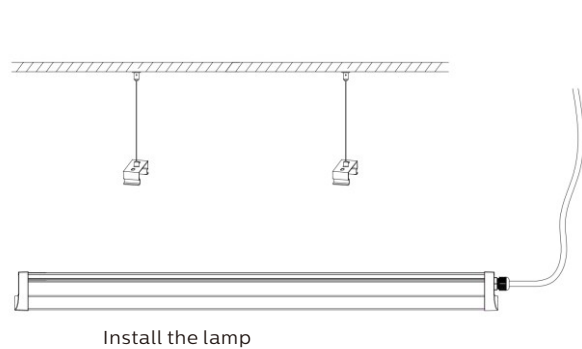


Spare Parts

1	U-shape Brackets	2pcs
2	self-tapping screws	4pcs
3	slotted plastic screws	4pcs



Suspension



INSTALLATION GUIDE

IMPORTANT SAFETY INFORMATION:

Please read all the instructions below before installation

- > Make sure that the supply voltage corresponds to the rated product voltage;
- > The product must be installed by a qualified electrician in accordance with the National Electrical Code and corresponding local codes.
- > If the product is damaged, do not use it!



Turn Off Power Supply



Wiring Diagram



RISK OF PERSONAL INJURY – READ and follow all WARNINGS and installation instructions.
Keep or give to the owner for future reference.

Risk of cuts: Wear gloves to prevent cuts or abrasions when removing from carton, handling, installing, and maintaining this product.
Risk of electric shock: This product must be installed in accordance with the applicable installation code by a person familiar with the construction and operation of the product and the hazards involved.
Risk of Fire: Minimum 194°F supply conductors. Consult a qualified electrician to ensure correct branch circuit conductor.

DUALWAYS® assumes no responsibility for claims arising out of improper or careless Installation or handling of this product.

Packaging Information

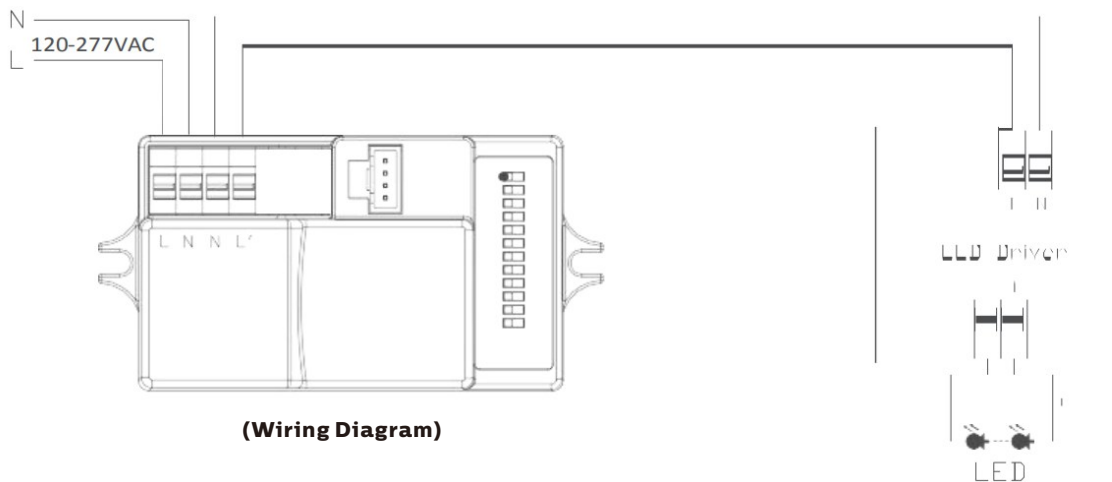
Model No.	Net Weight/Kg	Outer Carton Size/mm	Gross Weight/Kg	QTY"/CTN
DR-TP020-CG2XP	12.5	670*440*20	13.2	9PCS
DR-TP030-CG4XP	15.8	1270*360*200	17.5	9PCS
DR-TP040-CG4XP	16.1	1270*360*200	18.3	9PCS
DR-TP040-CG5XP	19.1	1570*360*200	20.6	9PCS
DR-TP050-CG5XP	19.5	1570*360*200	21.4	9PCS

Emergency Introduction

Model No.	Emergency	Emergency Power/W	Battery Parameter
DR-TP020-CG2XX	3	5	12V/800mAhNi-co Lithium
DR-TP030/O40-CG4XX	3	5	12V/800mAhNi-co Lithium
DR-TP040/O50-BG5XX	3	5	12V/800mAhNi-co Lithium

Microwave Sensor Introduction

On/Off Version



Function Introduction



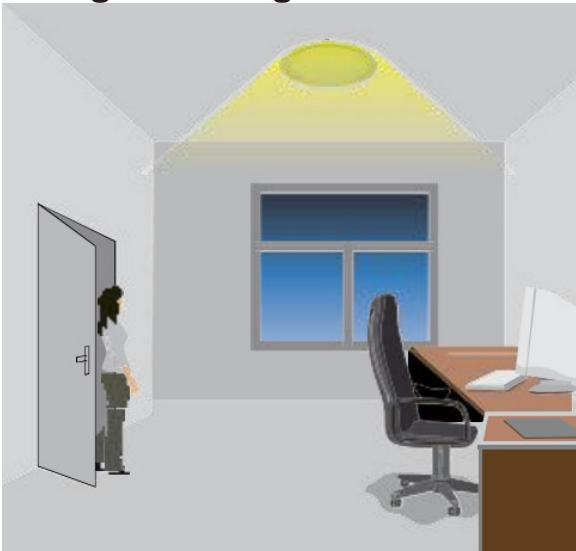
Light will turn on if any subject movement be detected within detection ranges.

- a. Standard hold time is 60s.
- b. Max detection range is 12x6m(ϕ xh).



Light will switch off after the hold time when no object movement within the detection ranges.

2 Stage Dimming Version



Light will turn on if any subject movement be detected within detection ranges.

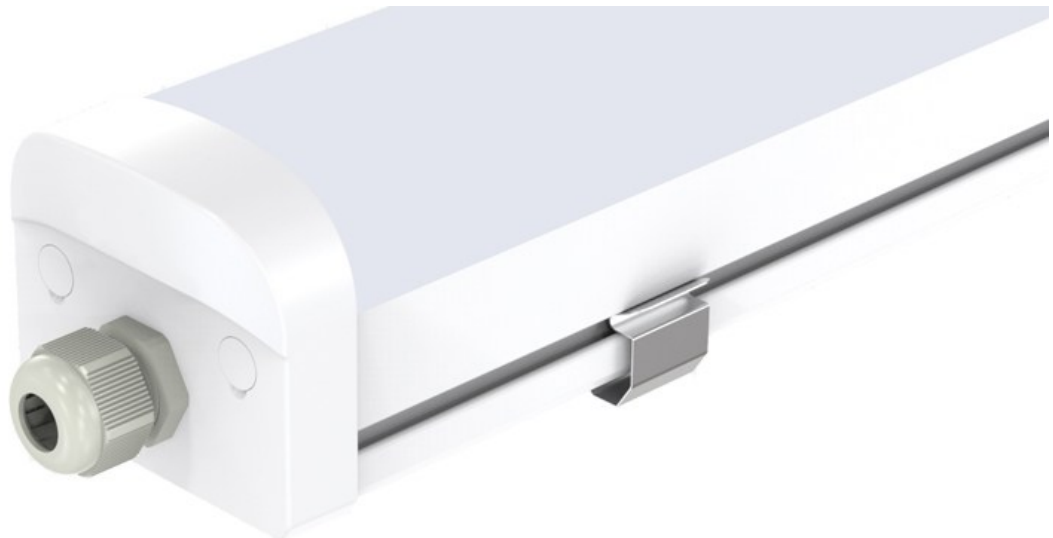
- a. Standard hold time is 60s.
- b. Max detection range is 12x6m(ϕ xh).



Light will dimming to 10%/20%/30%/50%(optional via set key) after the hold time when no object movement within detection ranges.

Details Demo

Full Plastic PC Housing and Cover,Al Profile PCBA Holder Inside,Eco and Environment Friendly>>>



Linkable Thorough Double End Wiring>>>



High Capacity LiFePO4 Battery, 5W@3 Hrs Emergency Time, 1,000 Cycles Charging/Discharging Time>>>



Application Reference

